

Herculite™ *Ultra*

Universal Nanohybrid Composite



WHERE LEGACY AND ADVANCED
TECHNOLOGY MEET.



Ushering in a new era of resin restorative dentistry



After 25 years as the industry standard, we took a powerful, trusted brand and applied our expertise in resin restorative technology and composite innovation to bring you Herculite® Ultra—strong and durable for posterior restorations, excellent esthetics for anterior restorations.

FEATURES

Optimal handling, non-slumping.
Superb ease of placement.

Long-lasting polishability.
Maintains lifelike luster long after initial restoration.

Herculite gold standard technology.
Proven 20+ years of experience.

High wear resistance and mechanical properties.
Long-lasting and durable.

Chameleon-like quality. Superior tooth-blending effect enabled by optimized filler size.

Anterior



Case images courtesy of Dr. Abdi Sameni.

Posterior



Case images courtesy of Dr. Simona Cuevas.

Time-Tested Herculite Technology

The 20+ year chemistry of the Herculite resin matrix results in:

- Exact Vita® shade matching and color stability
- Consistent clinical performance and longevity

The Science Behind Herculite Ultra

Filler Technology

Prepolymerized Filler (PPF)

Large enough to increase loading, our PPF is a proprietary blend of low-shrinkage resin, barium glass and nanoparticles, so plucking becomes a nonissue.

- Exceptional ease of polish and gloss retention
- Enhanced handling characteristics
- Decreased polymerization shrinkage

Point 4 Filler

(barium glass filler of 0.4 μm average size)

- Clinically proven durability
- Clinically proven polish

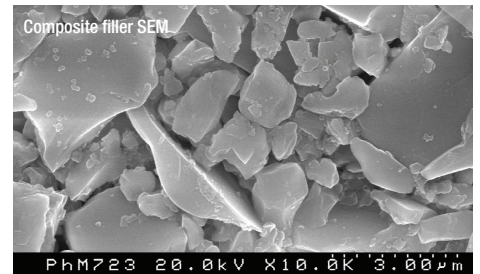
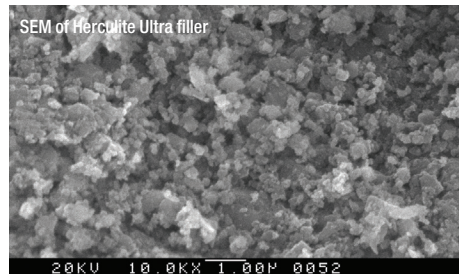
Silica Nanofiller

(20 – 50 nm)

- Enhanced polish
- Decreased shrinkage
- Optimal handling

Compare to Other Composites

Plucking, or natural wear over time, tends to occur faster in restorations with larger particles, decreasing the overall life and esthetics of the restoration.



8-year-old incisal restorations using Herculite.
Case image courtesy of Dr. Bruce LeBlanc.



13-year-old restoration on bicuspid using Herculite.
Case image courtesy of Northwestern University.

Where Legacy and Advanced Technology Meet.

Along with high gloss retention and true Vita™ shade match, the light refraction properties of Herculite™ Ultra allow single-layer restorations to blend flawlessly with the surrounding tooth structure. The need for multi-shade restorations is often eliminated, while maintaining a superior esthetic result.

Herculite Ultra Anterior Technique



Case images courtesy of Dr. Chris Ho

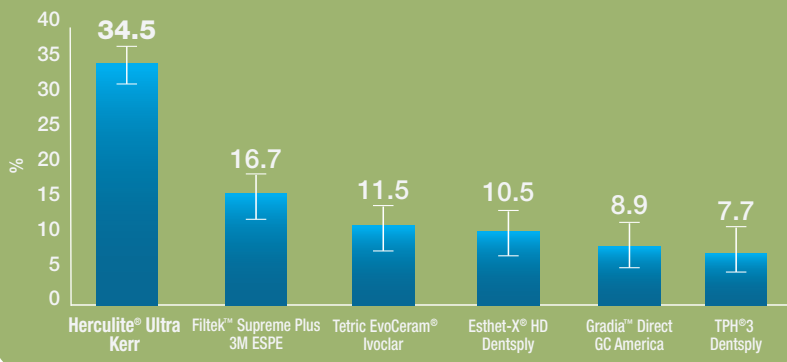
Research

Herculite Ultra optimized resin matrix works in harmony with Kerr's 0.4 micron proprietary filler—as evident in our composite brands Point 4 and Premise—and nanotechnology to create the ideal composite. Three fillers—prepolymerized filler (PPF), nanoparticles (20 – 50 nm), and a submicron hybrid filler (0.4 micron)—work together to achieve the ultimate esthetics and strength. The Herculite resin matrix is now optimized to yield creamy yet sculptable handling.

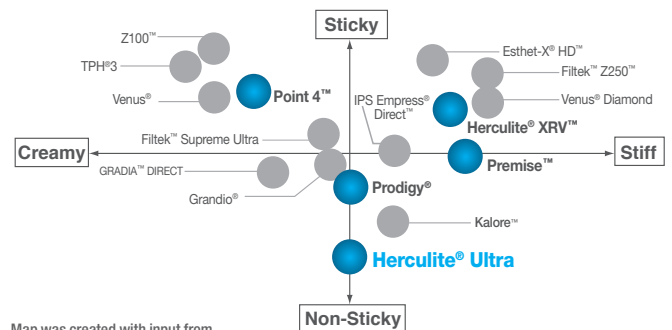
Physical Properties

| | |
|-------------------------------|------|
| Load Weight (%) | 78 |
| Flexural Strength (MPa) | 135 |
| Flexural Modulus (MPa) | 9400 |
| Compressive Strength (MPa) | 462 |
| Volumetric Shrinkage (%) | 2.7 |
| Gloss 60 Degrees (Leco) | 41 |
| Gloss 60 Degrees (Toothbrush) | 52 |
| Radiopacity (% Aluminum) | 250 |

Gloss Retention of Different Composites



Gloss is measured after cured specimens are toothbrush abraded at 10,000 cycles (350 g pressure, 90 strokes per minute). Study conducted by Nova University. Data available upon request.



Here's what clinicians are saying about Herculite™ Ultra

90% of focus group attendees said they would purchase Herculite Ultra over their current composite.

“Superb for a nanohybrid. Best composite ever.”

“Adapts really well, not sticky at all, really sculptable.”

ORDER TODAY!

SYRINGE REFILLS:

| | | | |
|-------|-------------|-------|---------------|
| 34337 | A1 Enamel | 35156 | D4 Enamel |
| 34338 | A2 Enamel | 35487 | A1 Dentin |
| 34339 | A3 Enamel | 34342 | A2 Dentin |
| 34447 | A3.5 Enamel | 34343 | A3 Dentin |
| 34771 | A4 Enamel | 35626 | A3.5 Dentin |
| 34340 | B1 Enamel | 35488 | A4 Dentin |
| 34772 | B2 Enamel | 35157 | B1 Dentin |
| 35153 | B3 Enamel | 35489 | B3 Dentin |
| 35154 | B4 Enamel | 35627 | C2 Dentin |
| 34341 | C1 Enamel | 35490 | C4 Dentin |
| 34773 | C2 Enamel | 35628 | D2 Dentin |
| 34774 | C3 Enamel | 34344 | Light Incisal |
| 35165 | C4 Enamel | 34336 | XL |
| 34775 | D2 Enamel | 35491 | XL2 |
| 35155 | D3 Enamel | | |

UNIDOSE REFILLS:

| | | | |
|-------|-------------|-------|---------------|
| 34347 | A1 Enamel | 35162 | D4 Enamel |
| 34348 | A2 Enamel | 35495 | A1 Dentin |
| 34349 | A3 Enamel | 34352 | A2 Dentin |
| 34448 | A3.5 Enamel | 34353 | A3 Dentin |
| 34776 | A4 Enamel | 35629 | A3.5 Dentin |
| 34350 | B1 Enamel | 35496 | A4 Dentin |
| 34777 | B2 Enamel | 35163 | B1 Dentin |
| 35159 | B3 Enamel | 35497 | B3 Dentin |
| 35160 | B4 Enamel | 35630 | C2 Dentin |
| 34351 | C1 Enamel | 35498 | C4 Dentin |
| 34778 | C2 Enamel | 35631 | D2 Dentin |
| 34779 | C3 Enamel | 34354 | Light Incisal |
| 35166 | C4 Enamel | 34346 | XL |
| 34780 | D2 Enamel | 35499 | XL2 |
| 35161 | D3 Enamel | | |



34333 HERCULITE ULTRA INTRO KIT

10 Herculite Ultra Unidose® Tips (2 g) in A2, 10 Herculite Ultra Unidose Tips (2 g) in A1, 1 Revolution® Formula 2™ Flowable Syringe in A2 (1 g), 10 Revolution Flowable Tips, 1 Large Gray Composite Gun, 20 OptiBond® All-In-One Unidose Tips (3.6 ml), 50 Disposable Applicators

RELATED PRODUCTS

BONDING AGENTS

OptiBond™ Solo Plus™
OptiBond™ XTR
OptiBond™ FL
OptiBond™ All-In-One



CURING LIGHTS

Demi™ Ultra
Demi™ Plus



UNIVERSAL COMPOSITE

Herculite™ Ultra Flow
Premise™
Herculite™ XRV™
Point 4™



SINGLE FILL™

SonicFill™



Kerr™